



Junior Class

- Class of 2025 -

Overview

1. Meet Your Counselors
2. Post-Secondary Planning
3. \$ for College
4. Resources
5. Naviance



Meet Your Counseling Team

Austin Wood

A-C

TJ Nelson

D-H

Camile Irving

I-ME

Betsey McGuire

MI-R

Jennifer Moore

S-Z

Kelley Griffin

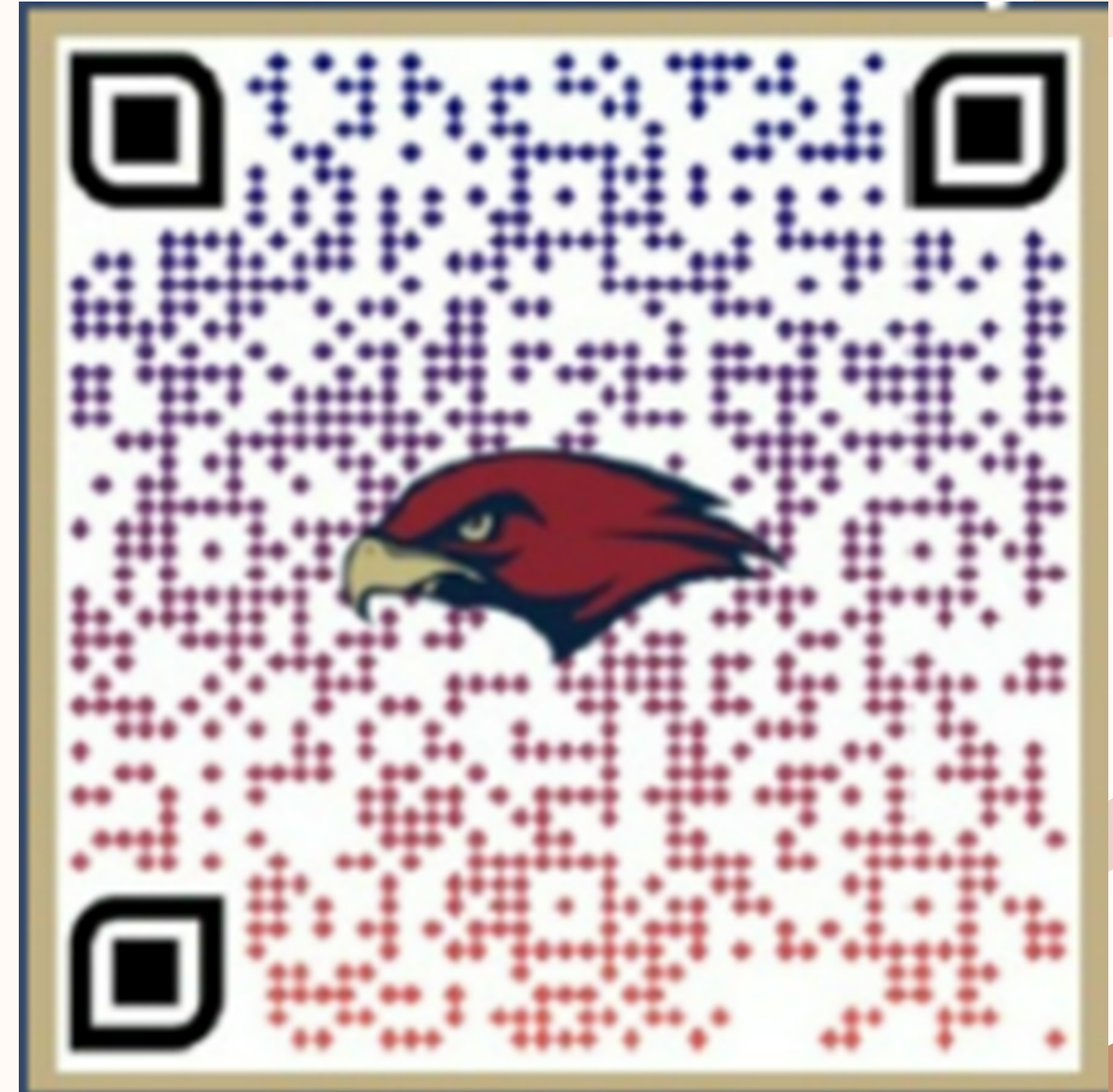
DUAL

ENROLLMENT &

EPIC

Kelli Vanderpool

COLLEGE/CAREER





Post- Secondary Options

- Workforce
- Apprenticeship
- Military
- 2-Year/Technical School
- 4-Year College/University



Apprenticeship

- An opportunity to be trained in a specific skilled trade at no cost while also being paid
- The average apprenticeship wage STARTS at \$15/hr and increases with years of experience
- The average starting salary after an apprenticeship program is \$70,000
- [Click for major apprenticeship programs in Georgia](#)



- [Apprenticeship Fact Sheet](#)

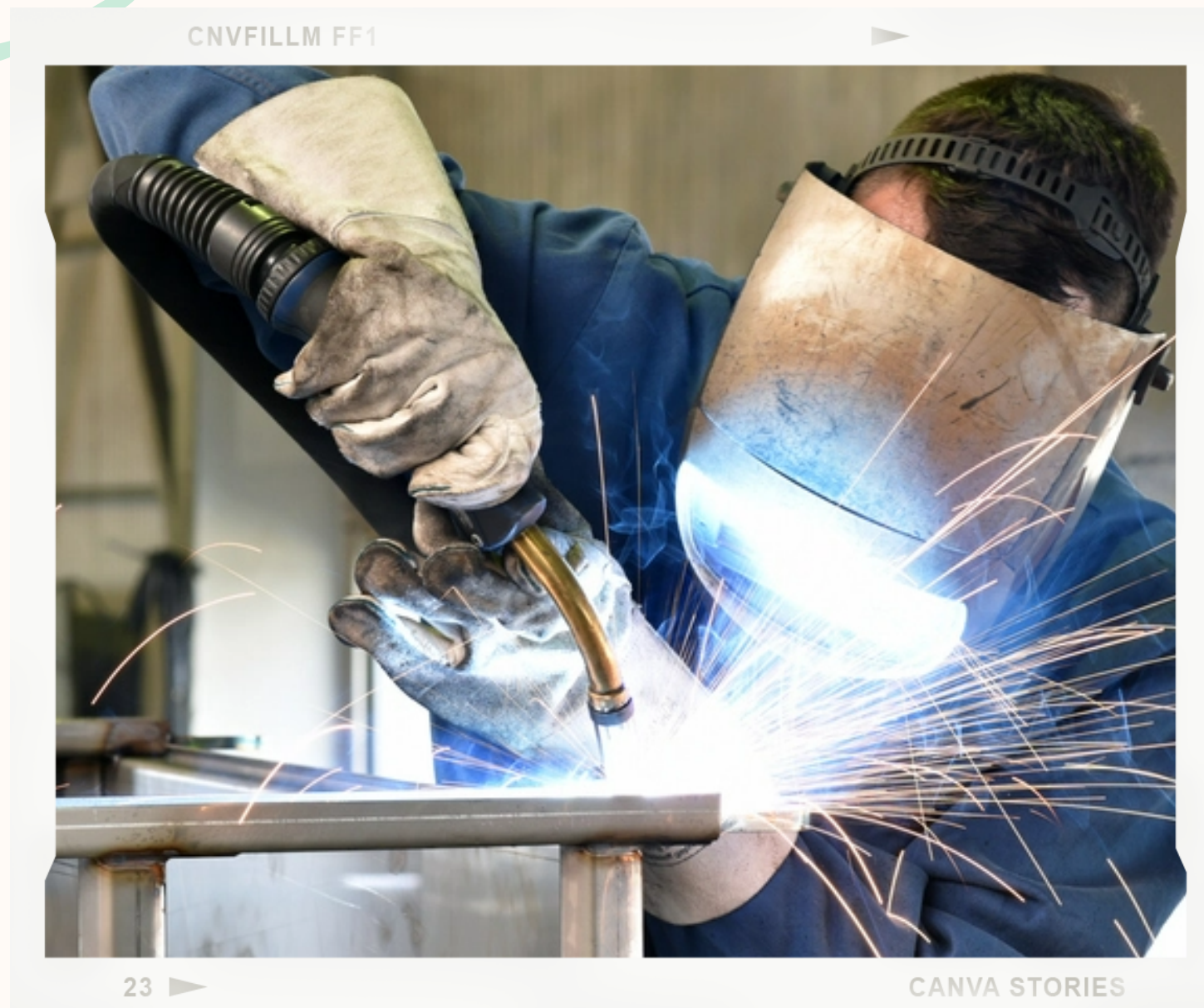


Military Branches

- Includes full-time and part-time options
- Require high school diploma and minimum ASVAB scores
- Benefits include free training, college tuition assistance (GI Bill), housing, health and dental benefits, travel & vacation time



Technical Colleges



- Offer degree programs, diplomas, and certificates
- Certificates can be completed in less than a year; Diplomas in around 1.5 years; Degrees in 2 years
- Some credits are guaranteed to transfer to a four-year college or university
- Affordable option close to home
- HOPE Career Grants may cover entire cost of some in-demand career programs
- Utilize completed programs to pay for future education

4-Year College/ University

The College Admissions Process



Build a College List

Take & Send ACT/SAT
Scores if Needed

Research Deadlines &
Submit Applications

Consider Financial Aid
& Scholarships

Building a College List

"Safety" Schools

1-2 on list

Colleges to which you will almost certainly be admitted

"Match" Schools

Most of your schools should be in this category

GPA/Test Scores/Other Features look very similar to those of recent entering freshmen classes

"Reach" Schools

1-2 on list

Colleges in which you meet the criteria for admission but may not have the stellar qualifications of most first-year students

Playing Matchmaker

WHAT DO COLLEGES LOOK FOR?

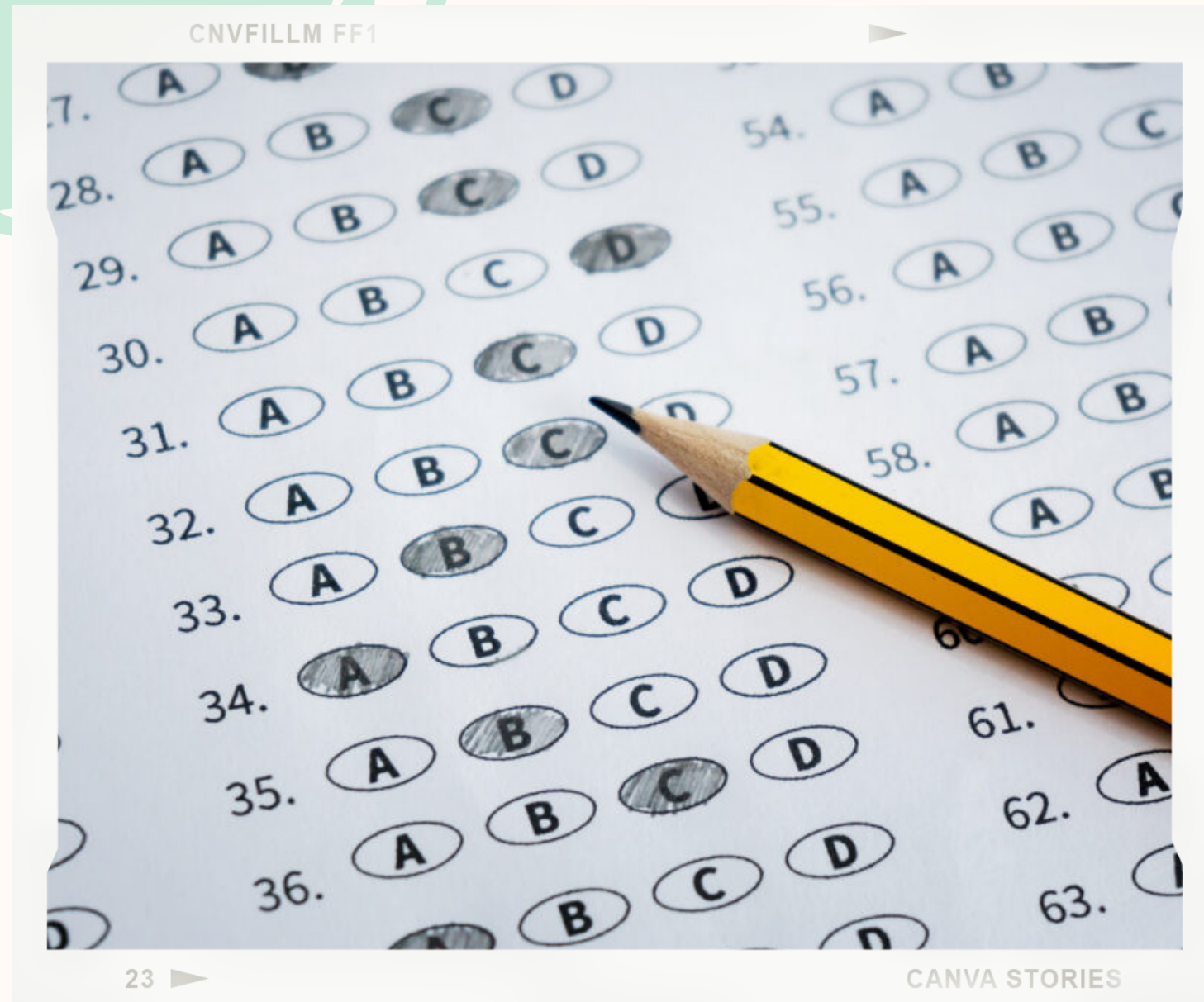
- Primary Factors
 - Rigor of classes
 - Grades
 - Test Scores (if applicable)
- Additional Factors
 - Extracurricular activities
 - Essays
 - Letters of Recommendation
 - Leadership/Community Service
- More colleges are beginning to use the HOLISTIC approach to a student - not just academics alone

WHAT SHOULD YOU CONSIDER?

- Size of the student body
- Diversity
- Location
- Academic programs
- Campus life (athletics, clubs/activities, housing)
- Graduation rates
- Percentage of students that find job placement after graduation
- Financial aid and scholarship opportunities
- Take campus tours!

SAT & ACT

- Both are tests that measure college readiness
- We encourage you to take at least one of these by spring of Junior year & again in summer or fall of Senior year
- You can take them as many times as you would like
- Many colleges in state are now test-optional
- For test dates, registration deadlines, and to sign up:
 - SAT - www.collegeboard.org
 - ACT - www.actstudent.org



SAT for All — March 26th

Probe College Fair
March 27, 2024
Mill Creek High School
6:00-8:00

**Colleges
scheduled to
attend.....**

Please note: colleges may register for the fair up
to seven days prior to the event

<http://tinyurl.com/ytk5avf8>

**Meet with college and university
representatives from across the
country.**

**Pre-register at
RegisterProbe.com
(select Mill Creek as site location)**



**Be sure to Pre-
Register using
this QR Code**

Finding MONEY!

- College-specific scholarships and grants
- Local Organizations
- GCPS Foundation
- Scholarship Search Engines
- State Funding: HOPE/Zell Miller Scholarship, HOPE/Zell Grant, HOPE Career Grant
- Make an appointment with our College & Career counselor, Mrs. Vanderpool!



State Scholarships and Grants

WE **MUST** HAVE YOUR SOCIAL SECURITY NUMBER ON FILE IN ORDER TO RECEIVE HOPE FUNDS!

- **HOPE Scholarship**

- Covers 95-100% of your tuition
- Minimum 3.0 CORE GPA

- **Zell Miller Scholarship**

- Covers 100% of your academic tuition
- 3.7 CORE GPA
- SAT combined score of 1200 in math and reading or ACT score of 26 or higher. Must be done in one sitting (no superscoring)

- **HOPE/Zell Miller Grants**

- Funds that can be utilized at technical colleges for certificate and diploma programs. No minimum GPA required!

- **Hope Career Grant**

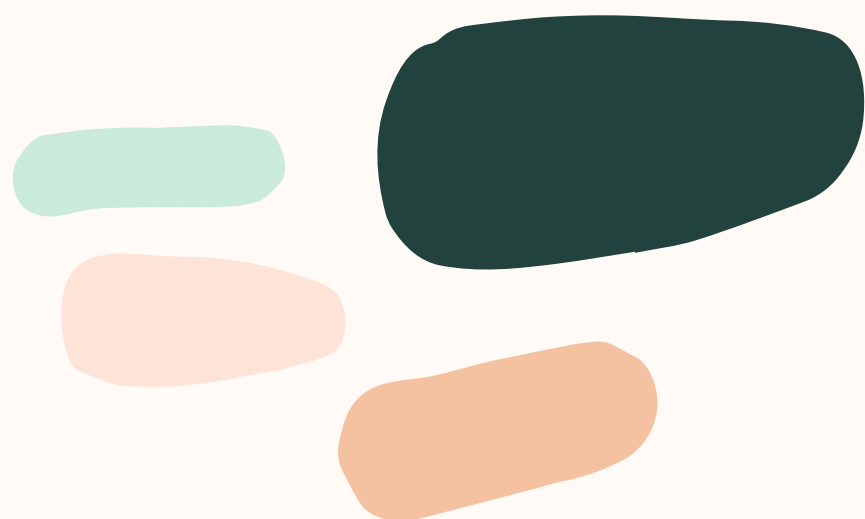
- Additional funding provided for certificate/diploma programs in fields that have a high need for workers

FAFSA

- **What is it?** Free Application for Federal Student Aid
- **When do I apply?** Dates may be changing next year, but typically fall of your senior year. We will keep you updated!
- **How do I apply?** www.fafsa.ed.gov - You'll need to first register for your FSA ID
- **Where can I use the money?** Colleges, Universities, Technical Colleges



Naviance



What is Naviance? What Can We Do With It?

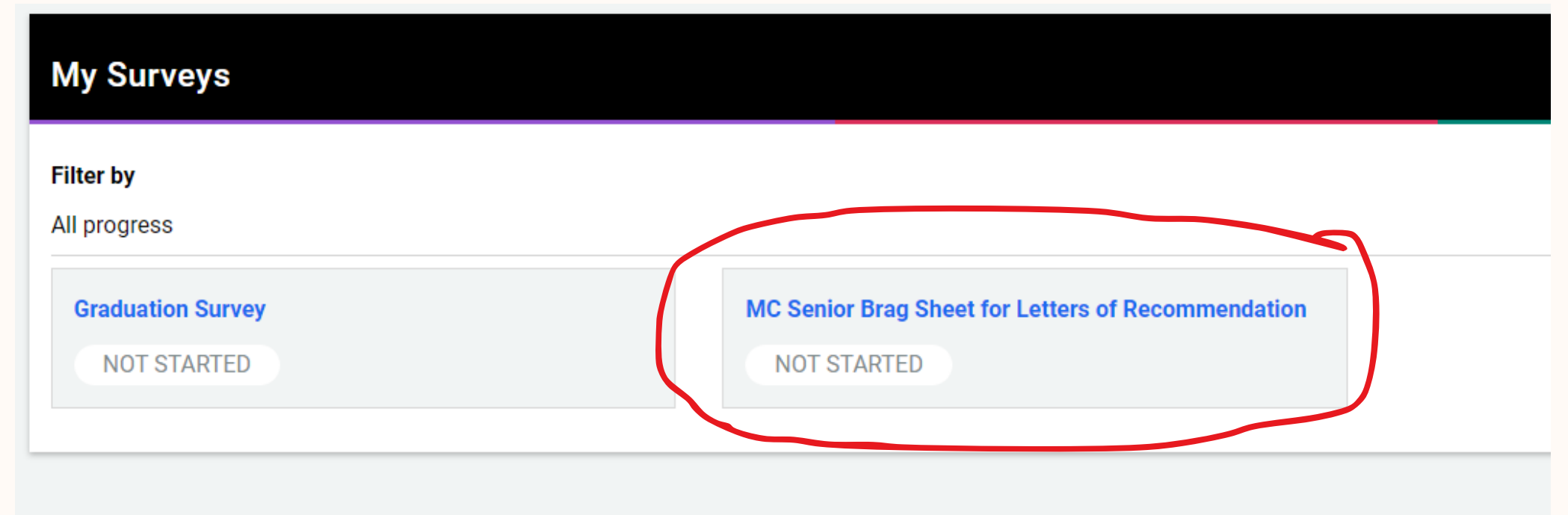
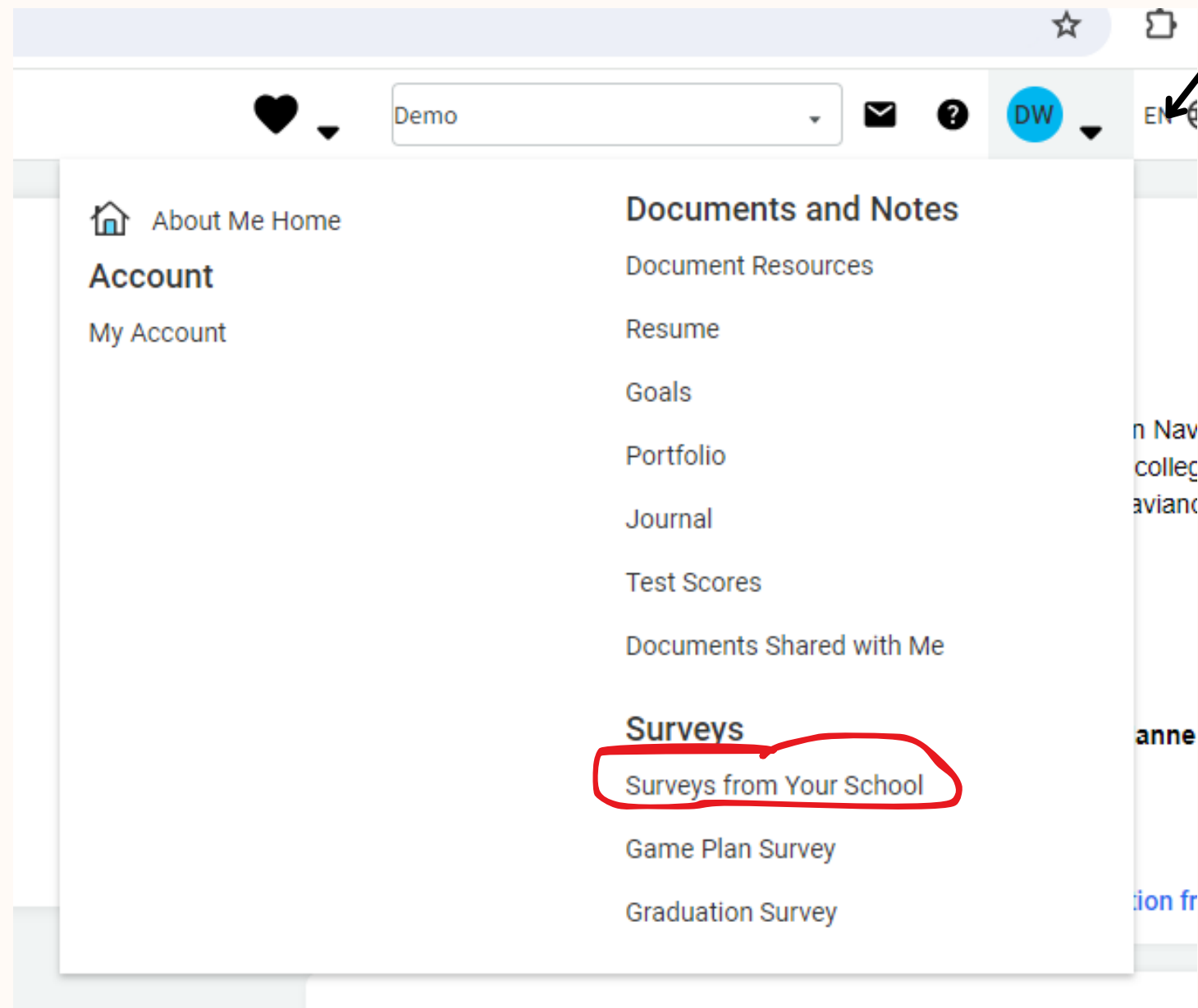
- Our main platform for managing college applications
- Build your student profile
- Search colleges based on your profile and inputted criteria
- View college details
- Compare colleges
- View estimated costs
- Take virtual college visits, in some schools
- Explore career options
- Explore your personality and interests as it relates to your college/career choices
- Request letters of recommendation
- Counselors send transcripts through this platform

Accessing Naviance

- Log into your eClass account
- Under "Additional Resources," scroll down to "Naviance"
- Boom! You're there!
- Now, lets complete a couple activities

Brag Sheet

You can now access your brag sheet and fill it out on Naviance. Click on the drop arrow next to your initials at the top right of naviance. Then click on surveys from your school.



Workforce Learning Survey

Under "Tasks from My School" click on 11th Workforce Development Lesson and Survey.


Tasks from My School

Task Or To-Do	Priority	Date
<input checked="" type="checkbox"/> 11th Grade IGP Task	None	07/15/24
<input checked="" type="checkbox"/> 11th Grade Dual Enrollment Survey Task	None	07/15/24
<input checked="" type="checkbox"/> 11th Workforce Development Lesson and Su... Task	None	07/15/24

[Go to My Planner](#)

11th Workforce Development Lesson and Survey

Status: Not started

 DUE Monday Jul 15, 2024

Task information

Requirement:

REQUIRED



To complete this task, you need to **take this survey**

To-Dos

No to-dos to show

Recent Updates

Complete the Workforce Learning Survey on Naviance in your tasks list. Task list is located on the home page of our Naviance account.

Tasks from My School

State and Local Workforce Development Initiative

Did you learn about Georgia workforce development opportunities? Yes or no? *

Are you interested in any of the workforce development opportunities? Yes or No?

If you responded "yes" to question 2, which workforce development initiative(s) do you find most interesting? You may check more than one answer.

- ☐ Apprenticeship Finder
- ☐ Atlanta Ironworkers Apprenticeship Program
- ☐ Georgia Power Careers & Training Programs
- ☐ Goodwill of North Georgia
- ☐ HOPE Career Grant- Free Tuition Program
- ☐ High Demand Careers List
- ☐ Independent Electrical Contractors Apprenticeship
- ☐ Masonry Training Program
- ☐ Mechanical Trades Institute

CANCEL

SAVE PROGRESS

SUBMIT

Complete the Workforce Learning survey and click **SUBMIT**

Submit IGP

Tasks from My School

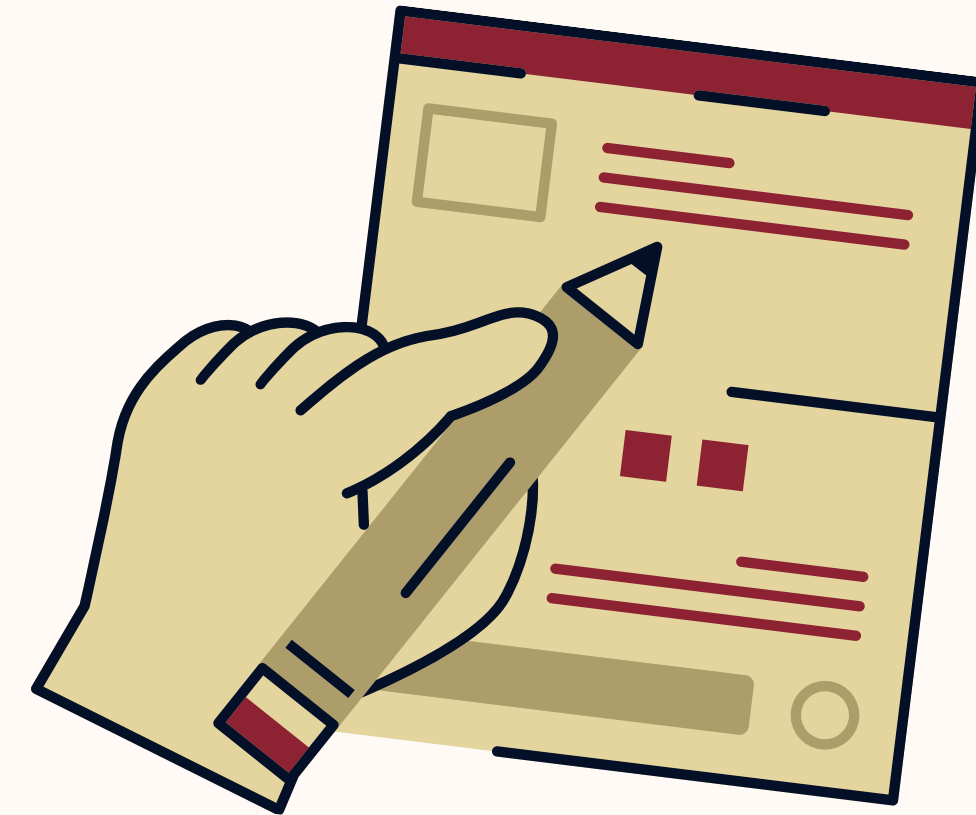
Task Or To-Do	Priority	Date
<input checked="" type="checkbox"/> 11th Grade IGP Task	None	07/15/24
<input checked="" type="checkbox"/> 11th Grade Dual Enrollment Survey Task	None	07/15/24
<input checked="" type="checkbox"/> 11th Workforce Development Lesson and Su... Task	None	07/15/24

[Go to My Planner](#)

Click on 11th
Grade IGP &
Then click
SUBMIT

GRAD. REQUIREMENT PROFILE

- LOG IN TO THE STUDENTVUE APP
- CLICK TO “DOCUMENTS”
- CLICK ON TO THE **FIRST** “TRANSCRIPT”
LISTED – DOCUMENT TITLED “GRAD
REQUIREMENT PROFILE”
- WE WILL REVIEW THIS DOCUMENT
TOGETHER






Course History						
Required		Completed			In Progress	
Subject Area	Credits	Course Title	Mark	Credits	Course Title	Credits
9th Grade Lit & Comp	1.000	23.0610001 - 9TH GR LIT AND COMP	78	0.500		
		23.0610002 - 9TH GR LIT AND COMP	91	0.500		
10th Grade LA Option	1.000	23.0620001 - 10 LIT & COMP	76	0.500		
		23.0620002 - 10 LIT & COMP	72	0.500		
American Lit & Comp	1.000	23.1510001 - 11 AM LIT & COMP	73	0.500		
		23.1510002 - 11 AM LIT & COMP	70	0.500		
12th Grade LA Option	1.000	23.0520001 - 12 BR LIT & COMP	70	0.500		0.500
Mathematics	4.000	27.0990001 - ALG I	P	0.500		1.000
		27.0990002 - ALG I	P	0.500		
		27.0991001 - GEOMETRY	76	0.500		
		27.0991002 - GEOMETRY	80	0.500		
		27.0992001 - ALGEBRA II	55			
		27.0992002 - ALGEBRA II	59			
		27.1992001 - ALGEBRA II	71	0.500		
		27.1992002 - ALGEBRA II	75	0.500		
		27.0850001 - ADV MATH DEC MA	63			

Dual Enrollment

Click on 11th Grade Dual Enrollment Survey and complete the survey!

Tasks from My School

Task Or To-Do	Priority	Date
 11th Grade IGP Task	None	07/15/24
 11th Grade Dual Enrollment Survey Task	None	07/15/24
 11th Workforce Development Lesson and Su... Task	None	07/15/24

[Go to My Planner](#)



To complete this task, you need to [take this survey](#)

College Super Match

The screenshot shows the NAVIANCE BY POWERSCHOOL website. The top navigation bar includes links for Home, Self-Discovery, Careers, Colleges, and Planner. The 'Colleges' menu is expanded, showing options like College Home, Find Your fit, SuperMatch College Search, College Events, Advanced College Search, College Lookup, Research Colleges, Colleges I'm Thinking About, College Visits, College Resources, Enrichment Programs, College Maps, Apply to College, Colleges I'm Applying to, and Test Scores. A green arrow points to 'SuperMatch College Search'.

NAVIANCE
BY POWERSCHOOL

Welcome, Demo

Search for C

Colleges

- College Home
- Find Your fit
- SuperMatch College Search**
- College Events
- Advanced College Search
- College Lookup
- Research Colleges
- Colleges I'm Thinking About
- College Visits
- College Resources
- Enrichment Programs
- College Maps
- Apply to College
- Colleges I'm Applying to
- Test Scores

CLICK HERE

College Super Match

The screenshot shows the 'SuperMatch College Search' interface. At the top, there's a dark blue header with the title 'SuperMatch College Search' and a link 'About SuperMatch'. Below the header is a navigation bar with tabs: 'Choose Fit Criteria' (active), 'Location', 'Academics', 'Admission', 'Student Life', 'Diversity', 'Institution Characteristics', 'Cost', 'Athletics', and 'Resources'. The main content area is titled 'Your Fit Criteria' and includes a subheading 'Add a subheading'. On the left, a box indicates '0 selected criteria' and contains a 'Select Criteria To Start' button. Below this, instructions state: 'To refine your results, use the arrows to move your criteria into the "Must Have" or "Nice to Have" boxes.' On the right, there are two large dashed boxes labeled 'Must Have' and 'Nice to Have', each with a brief definition. The 'Must Have' box says: 'A *Must Have* is anything you absolutely need to be happy and successful.' The 'Nice to Have' box says: 'A *Nice to Have* is anything that's important to you, but isn't an absolute must have.' At the bottom left, it says 'No Results Yet'. On the right side, there are 'Saved Searches' options: 'Choose one' with a dropdown arrow, and two buttons: 'Save Search' and 'Start Over'. A green arrow points from the 'Select Criteria To Start' button to the text 'Step 1: Choose your fit criteria' at the bottom of the image.

Step 1: Choose your fit criteria

College Super Match

SuperMatch College SearchAbout SuperMatch ?

III Choose Fit CriteriaLocationAcademicsAdmissionStudent LifeDiversityInstitution CharacteristicsCostAthleticsResources

Your Fit Criteria

11 selected criteria
To refine your results, use the arrows to move your criteria into the "Must Have" and "Nice to Have" boxes.

Must Have

✕ Location [9] →✕ Major [1] →✕ Campus Surroundings [1] →
✕ High Graduation Rate →✕ Campus Housing →
✕ Cost < \$15000 →

Nice to Have

✕ Athletics [1] ←✕ Hispanic Serving Institutions ←
✕ Gender Concentration [1] ←✕ Army ROTC ←✕ ESL/ELL Services ←

Your Results

Your results include **0 institutions** that are both an **academic match** and also match all the criteria selected above.

Step 2: Identify which criteria are Must Haves vs. Nice to Haves. Criteria can be switched between Must Haves & Nice to Haves by clicking arrow next to criteria.

College Super Match

Step 3: Explore your results

	Fit Score ⓘ	Academic Match ⓘ	Highlights ▼	Cost ▼	Admission Info ▼
Florida Atlantic University Boca Raton, FL, Small City 4 year, Public ★ PIN TO COMPARE ♡ FAVORITE	86% Why?	Match Average GPA 3.8 3.3 SAT 1160 1425 ACT 24 21	Photos/Videos on Profile Virtual Tour	Tuition & Fees \$2,522 In State (FL) \$14,374 Out of State Room & Board \$12,006	Acceptance Rate 62% App Fee \$30
Florida State University Tallahassee, FL, Small City 4 year, Public ★ PIN TO COMPARE ♡ FAVORITE				Tuition & Fees \$4,640 In State (FL) \$19,084 Out of State Room & Board \$10,458	Acceptance Rate 58% Accepts Coalition App App Fee \$30
Transylvania University Lexington, KY, Small City 4 year, Private nonprofit, Christian Church (Disciples of Christ) ★ PIN TO COMPARE ♡ FAVORITE	82% Why?	Match Average GPA 3.73 3.3 ⓘ SAT N/A 1425 ACT N/A 21 <small>SuperMatch doesn't have sufficient data history for</small>		Tuition & Fees \$35,770 Room & Board \$10,160	Acceptance Rate 95% Accepts Common App Test Optional

Step 4: **Add at least 3 colleges to your favorites list by selecting the heart icon.** Try to pick at least one match, safety, and reach option

Step 5: Select "Pin to Compare" for the colleges you added to your favorites list

Click on "Colleges I'm Thinking About" under the "Colleges" tab, and show me your 3 saved colleges

[Home](#) [Self-Discovery](#) [Courses](#) [Careers](#) [Colleges](#) [Planner](#)

College Home

Find Your fit

SuperMatch College Search

College Match

College Events

Scattergrams

Advanced College Search

College Lookup

Research Colleges

Colleges I'm Thinking About

College Visits

College Compare

College Resources

Acceptance History

Enrichment Programs

College Maps

Apply to College

Colleges I'm Applying To

Manage Transcripts

Letters of Recommendation

Test Scores

Scholarships & Money

College-Specific Scholarships

National Scholarship Search

Scholarship Search

Favorite Scholarships

Colleges I'm Thinking About

[+ Add Colleges to List](#)[Compare Me](#)

✦ = extended profile available

[Update Interest](#)[Move to Application List](#)[Remove](#)

	College	Delivery Type	Added By	Expected Difficulty*	Application Deadlines	Interest	
<input type="checkbox"/>	Paine College	CA	Student	N/A	Deadlines	N/A	More
<input type="checkbox"/>	✦ Piedmont University	CA	Student	N/A	Deadlines	N/A	More
<input type="checkbox"/>	University of West Georgia		Student	N/A	N/A	N/A	More

Thank You!!

Student Planner:
You should have 4
Tasks Completed

Tasks you've completed

- | | | |
|--------|---|----------|
| ✓ Done | 11th Grade Dual Enrollment Survey
Monday Jul 15, 2024
Assigned by Erica Harris | REQUIRED |
| ✓ Done | 11th Workforce Development Lesson and Survey
Monday Jul 15, 2024
Assigned by Erica Harris | REQUIRED |
| ✓ Done | Complete SuperMatch™ college search
No Due Date
Assigned by Erica Harris | REQUIRED |
| ✓ Done | 11th Grade IGP
Monday Jul 15, 2024
Assigned by Erica Harris | REQUIRED |